

PART OF THE S.E. 1/4 OF
SECTION 17, T.6N.,R.1W., S.L.B.&M.

IN OGDEN CITY
SCALE 1" = 50'

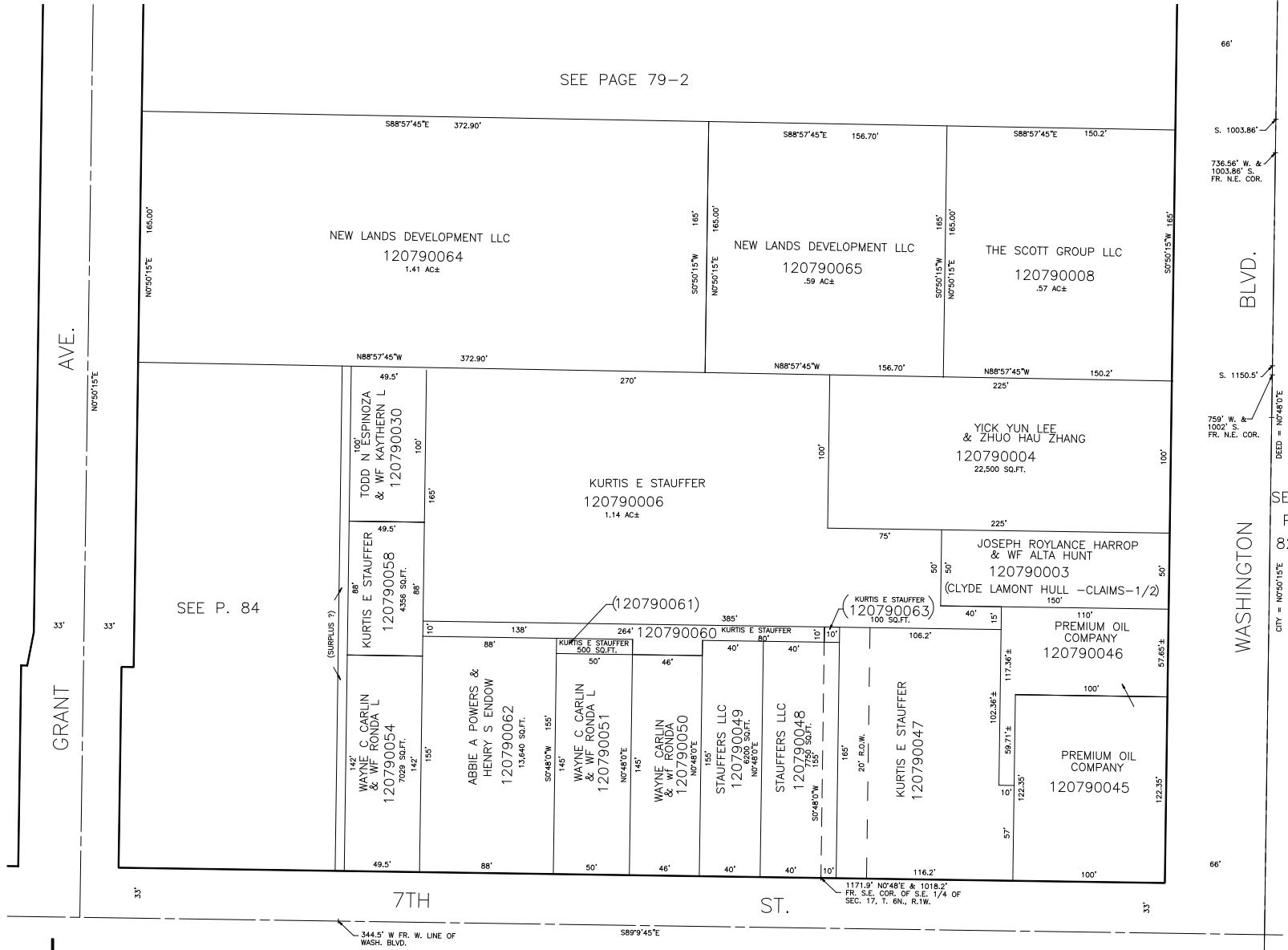
TAXING UNIT: 25

79-1

ALSO SEE P. 79-2

730.8' N88°57'30"W & 839.30'
50'48"W FR. N.E. COR. OF S.E. 1/4

SEE PAGE 79-2



66'

S. 1003.86'
736.56' W. &
1003.86' S.
FR. N.E. COR.

BLVD.

S. 1150.5'
750' W. &
1150' S.
FR. N.E. COR.
DEED = N0748'0"E

SEE
P.
82

WASHINGTON
CITY = N0750'15"E

66'

7TH
ST.

344.5' W FR. W. LINE OF
WASH. BLVD.

589'9"45"E

1171.9' N0748'E & 1018.2'
FR. S.E. COR. OF S.E. 1/4 OF
SEC. 17, T. 6N., R. 1W.

SEE PAGE 83